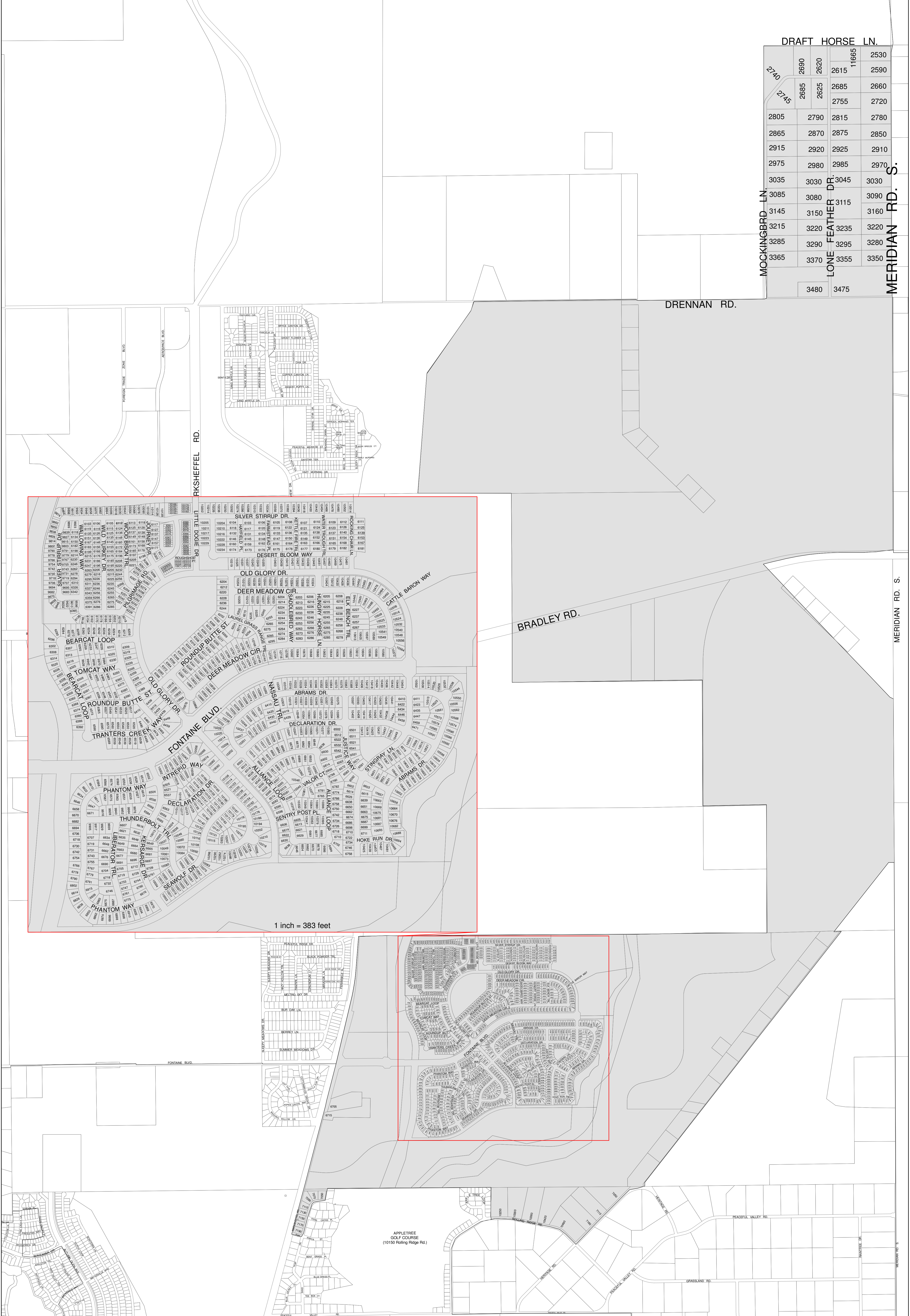


		DRAFT HORSE LN.	
2740	2690	2615	2530
		2685	2590
2745	2685	2625	2660
		2685	2660
2805	2790	2815	2780
2865	2870	2875	2850
2915	2920	2925	2910
2975	2980	2985	2970
3035	3030	3045	3030
3085	3080	3115	3090
3145	3150	3160	3160
3215	3220	3235	3220
3285	3290	3295	3280
3365	3370	3355	3350
		3480	3475



1 inch = 383 feet

Map 1 of 1

COPYRIGHT 2016 by the Board of County Commissioners, El Paso County, Colorado. All rights reserved. No part of this document or data contained hereon may be reproduced, used to prepare derivative products, or distributed without the specific written approval of the Board of County Commissioners, El Paso County, Colorado. This document was prepared from the best data available at the time of plotting and is for internal use only. El Paso County, Colorado, makes no claim as to the completeness or accuracy of the data contained hereon.

Scale: 1 inch = 817 feet
Date: July 7, 2016

Precinct 651

El Paso County, Colorado

This precinct is in the following districts:
County Commissioner District 4
State Representative District 19
State Senate District 12

